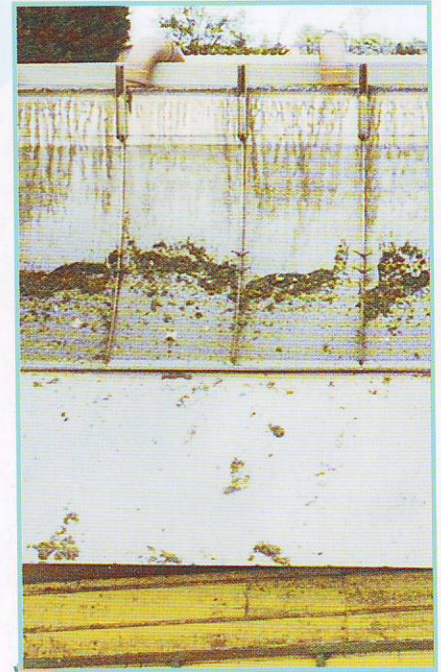


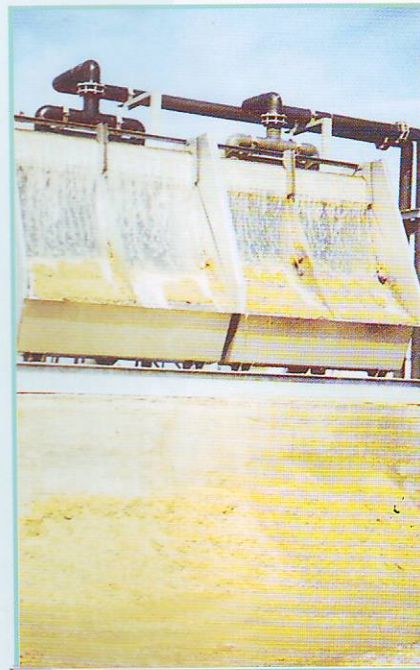
## Q-Screens



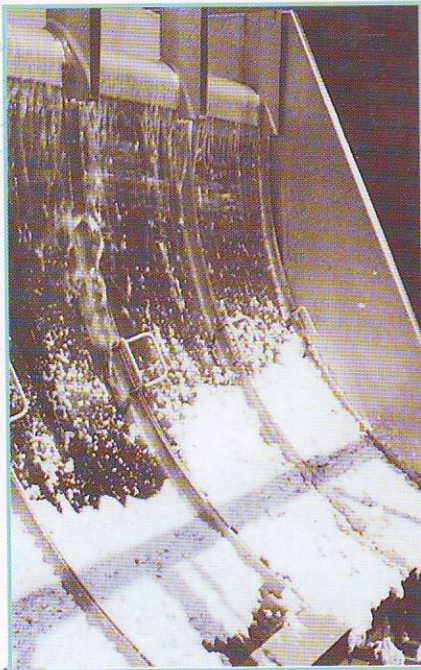
*Textile Effluent*



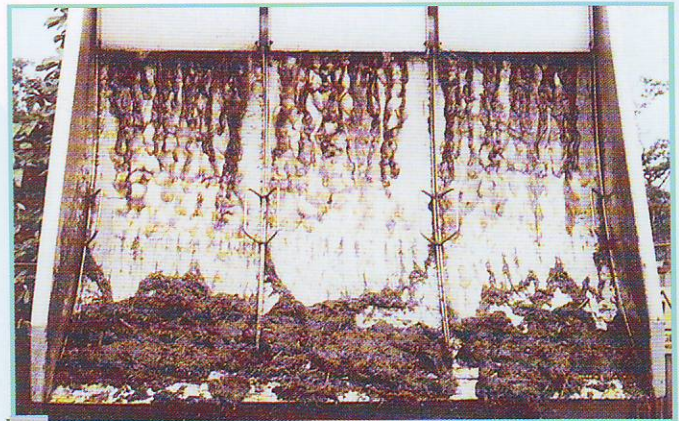
*Vegetable Processing Effluent*



*Maltings Effluent*



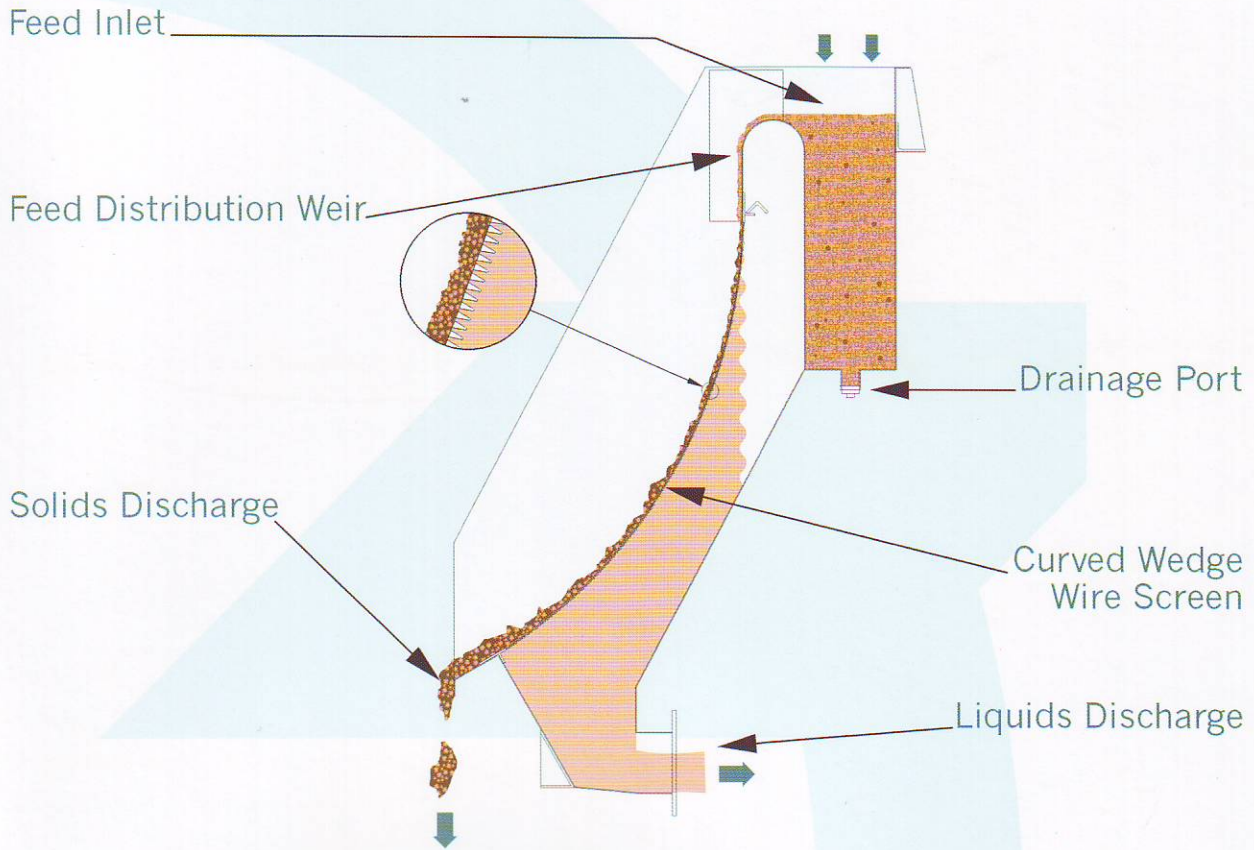
*Laundry Effluent*



*Mushroom Compost*







## Q-SCREENS

### BASIS: CAPACITY PER UNIT WIDTH OF SCREEN

| APERTURE<br>(mm) | SCREEN RADIUS 18" |                      | SCREEN RADIUS 30" |                      | SCREEN RADIUS 48" |                      | SCREEN RADIUS 60" |                      |
|------------------|-------------------|----------------------|-------------------|----------------------|-------------------|----------------------|-------------------|----------------------|
|                  | CAPACITY          |                      | CAPACITY          |                      | CAPACITY          |                      | CAPACITY          |                      |
|                  | GPM/FT            | M <sup>3</sup> /HR/M | GPM/FT            | M <sup>3</sup> /HR/M | GPM/FT            | M <sup>3</sup> /HR/M | GPM/FT            | M <sup>3</sup> /HR/M |
| 0.25             | 6.29              | 5.76                 | 10.48             | 9.58                 | 12.57             | 11.48                | 15.70             | 14.36                |
| 0.50             | 11.01             | 10.08                | 18.34             | 16.76                | 25.14             | 22.97                | 31.40             | 28.72                |
| 0.75             | 23.60             | 21.60                | 39.30             | 35.91                | 41.90             | 38.28                | 52.34             | 47.85                |
| 1.00             | 31.46             | 28.80                | 52.40             | 47.88                | 62.85             | 57.42                | 78.51             | 71.78                |
| 1.50             | 47.19             | 43.20                | 78.60             | 71.82                | 104.75            | 95.70                | 130.85            | 119.63               |
| 2.00             | 62.92             | 57.60                | 104.80            | 95.76                | 125.70            | 114.84               | 157.02            | 143.55               |
| 3.00             | 78.65             | 72.00                | 131.00            | 119.70               | 167.60            | 153.12               | 209.36            | 191.40               |



*Static System*



*Controlled Pump  
or Gravity Fed*



*Low Maintenance*



*Gravity Solids Discharge*



*Reversible Wedge Wire  
Screen Panels*



*On Site Demonstration  
Facilities Available*