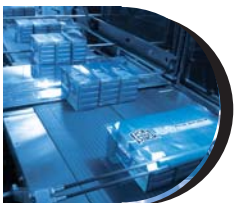


CLEARPRINT Series

Print Registered Film



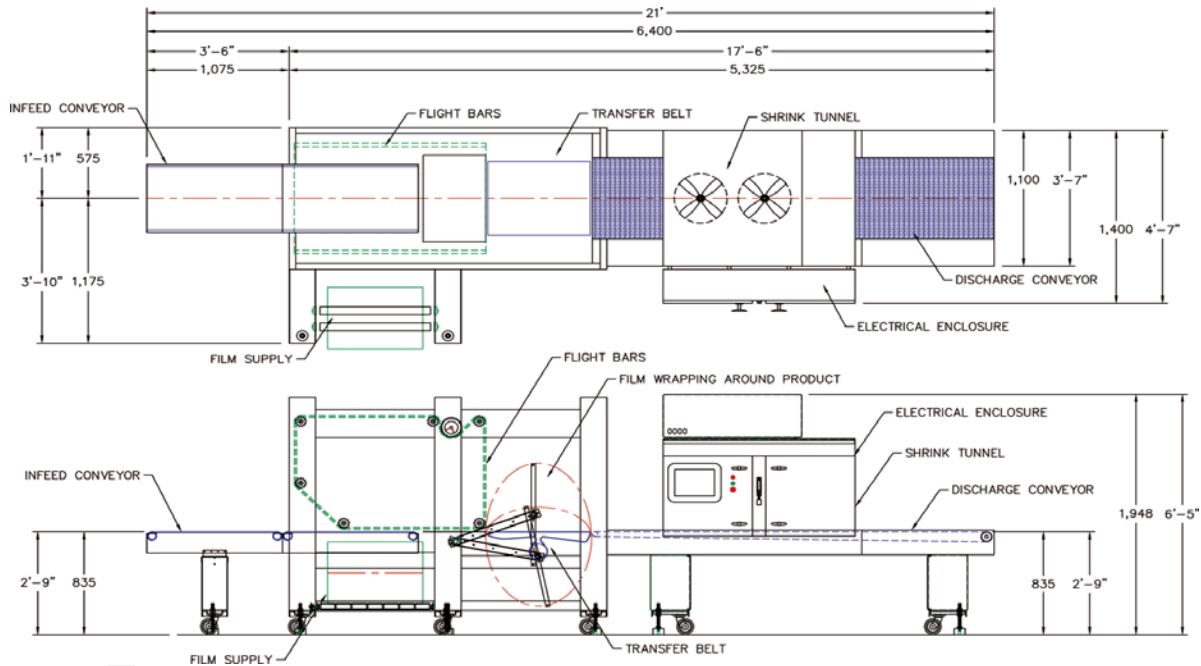
- **Continuous motion machine**
With an inline or side infeed conveyor system
- **Capable of running light gauge film**
Clear, random or print registered polyethylene
- **Wraps individual products, pad/tray and multipacks**
- **Integrated film perforation system (patent pending)**
- **Runs products between 2" and 14" height**
Adjustment of the repeat length is mechanical and repeatable
- **Continuous web delivery (patent pending)**
As opposed to single sheet delivery
- **Low side mounted film**
Easy load with cradle mounted 20" O.D.
- **Speeds up to 60 wraps per minute single lane**
120 wraps per minutes dual lane



**poly
pack**

innovation
in packaging
equipment

CLEARPRINT Series



Equipment Benefits

- Affordable automation
- Retail ready wraps without high equipment costs
- Compact size from only 21 ft
- Integrated film perforation system
- Patent pending belt drive film applicator system
- Large width film capability
- Able to run film from 1 mil to 3 mil!
- Eliminates vacuum belt driven film delivery systems
- Clear or print registered polyethylene film
- Stainless steel construction

Corporate Headquarters

3301 Gateway Centre Blvd. | Pinellas Park, FL 33782
Tel: 727.578.5000 | Fax: 727.578.1300
Web: www.polypack.com | Email: info@polypack.com



poly innovation
pack in packaging
equipment