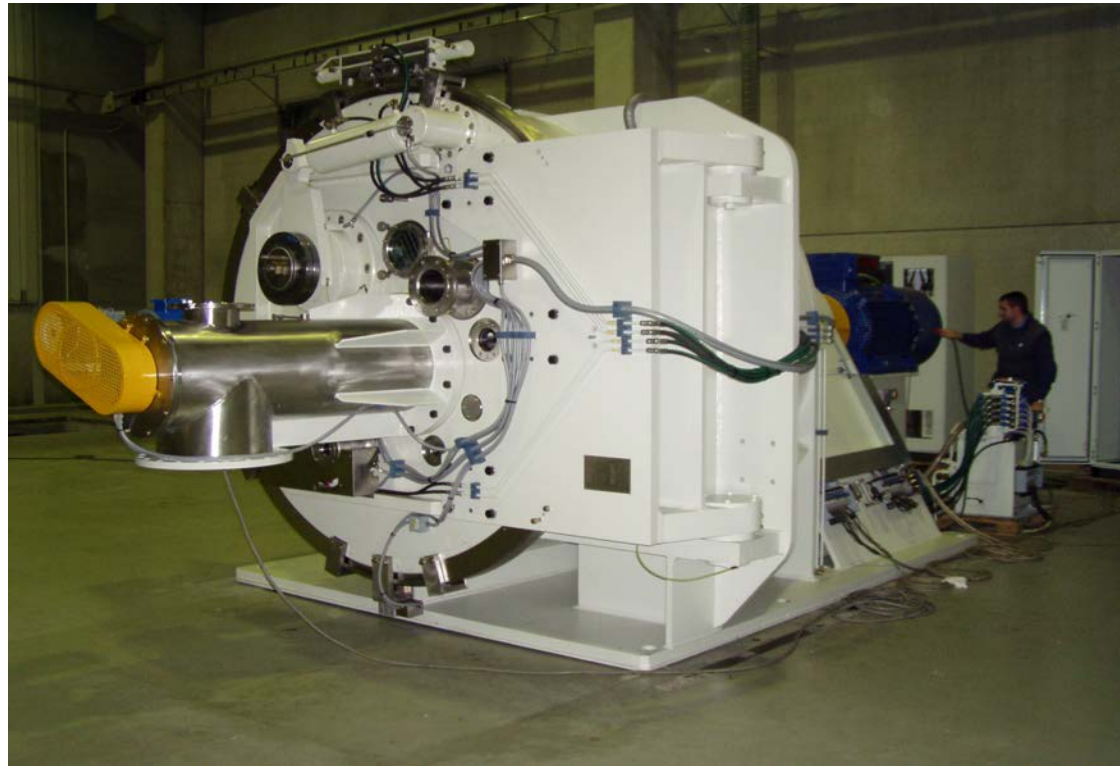


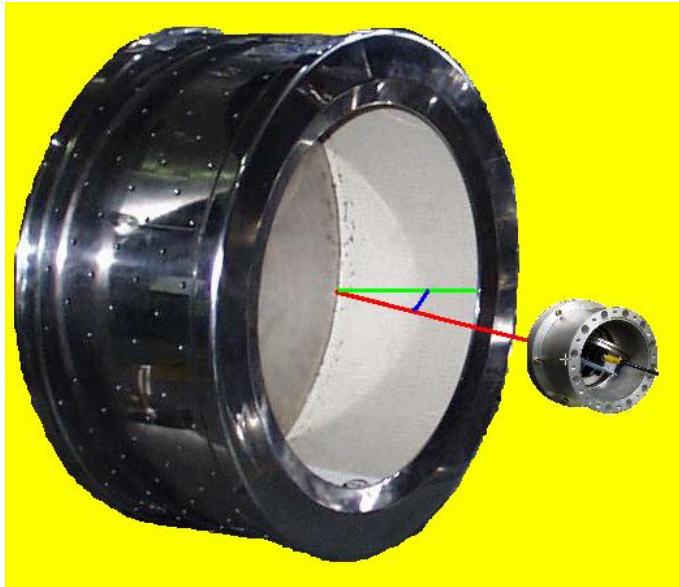


# Comi Condor's Peeler Centrifuge HX for chemical industry

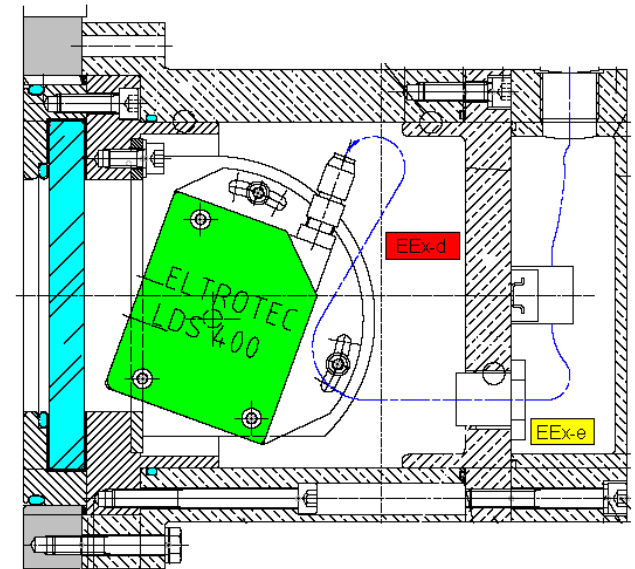




# Cake detector, laser type



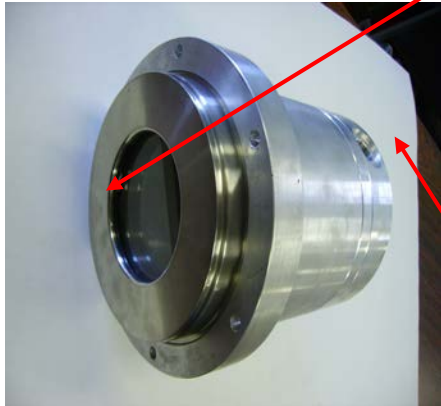
A light beam measures the distance between source and obstacle



The instrument is enclosed in an ATEX certified protective box

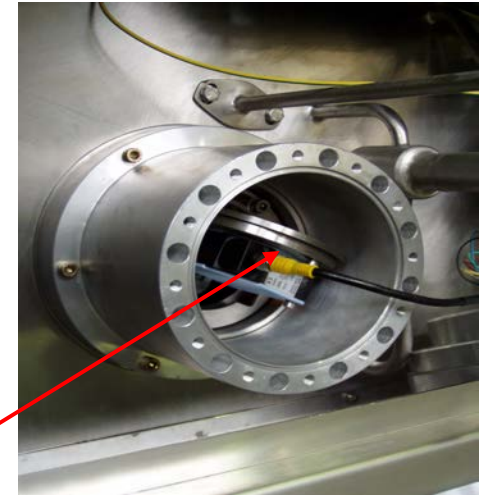


# Cake detector, laser type



Sight glass  
(in process  
room)

Cable entry  
(External)



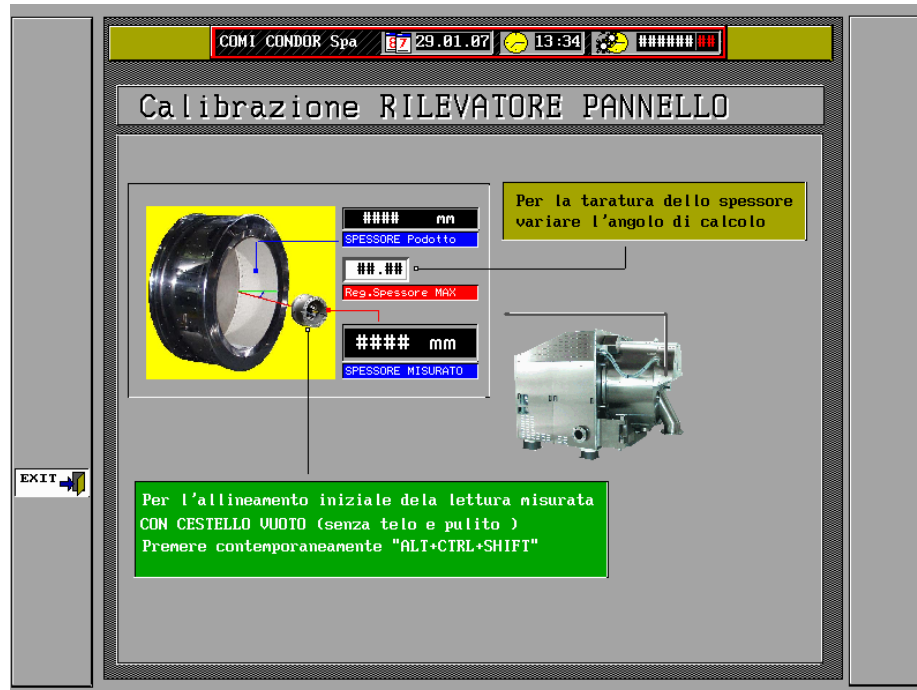
Laser  
sensor



No membrane,  
No moving/vibrating parts



# Cake detector, laser type



Easy calibration

ONCE AND  
FOR ALL



# Cake detector, laser type



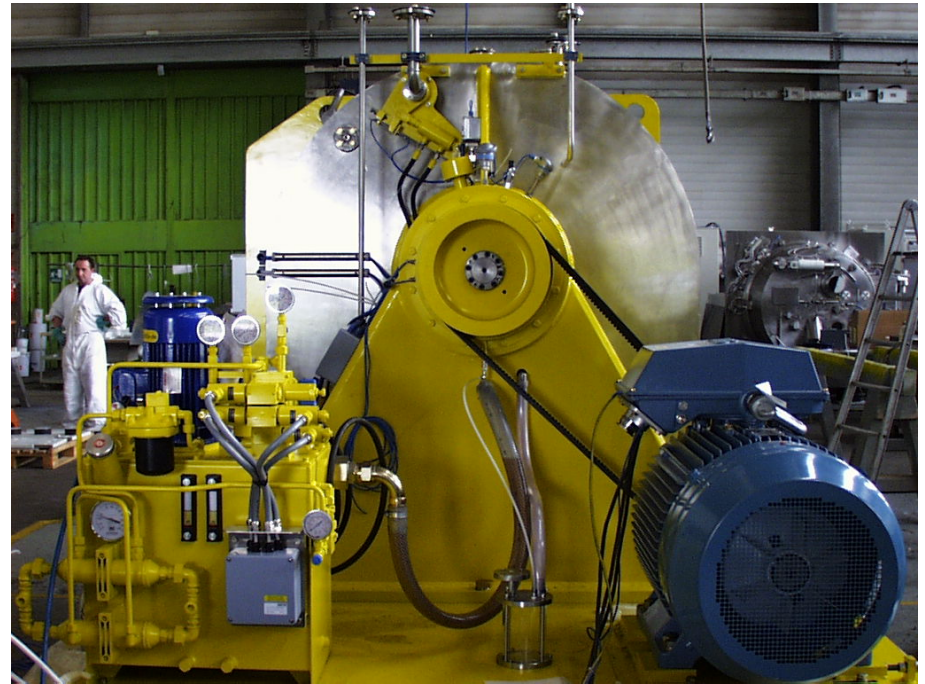
Flush design  
for an easy  
rinsing

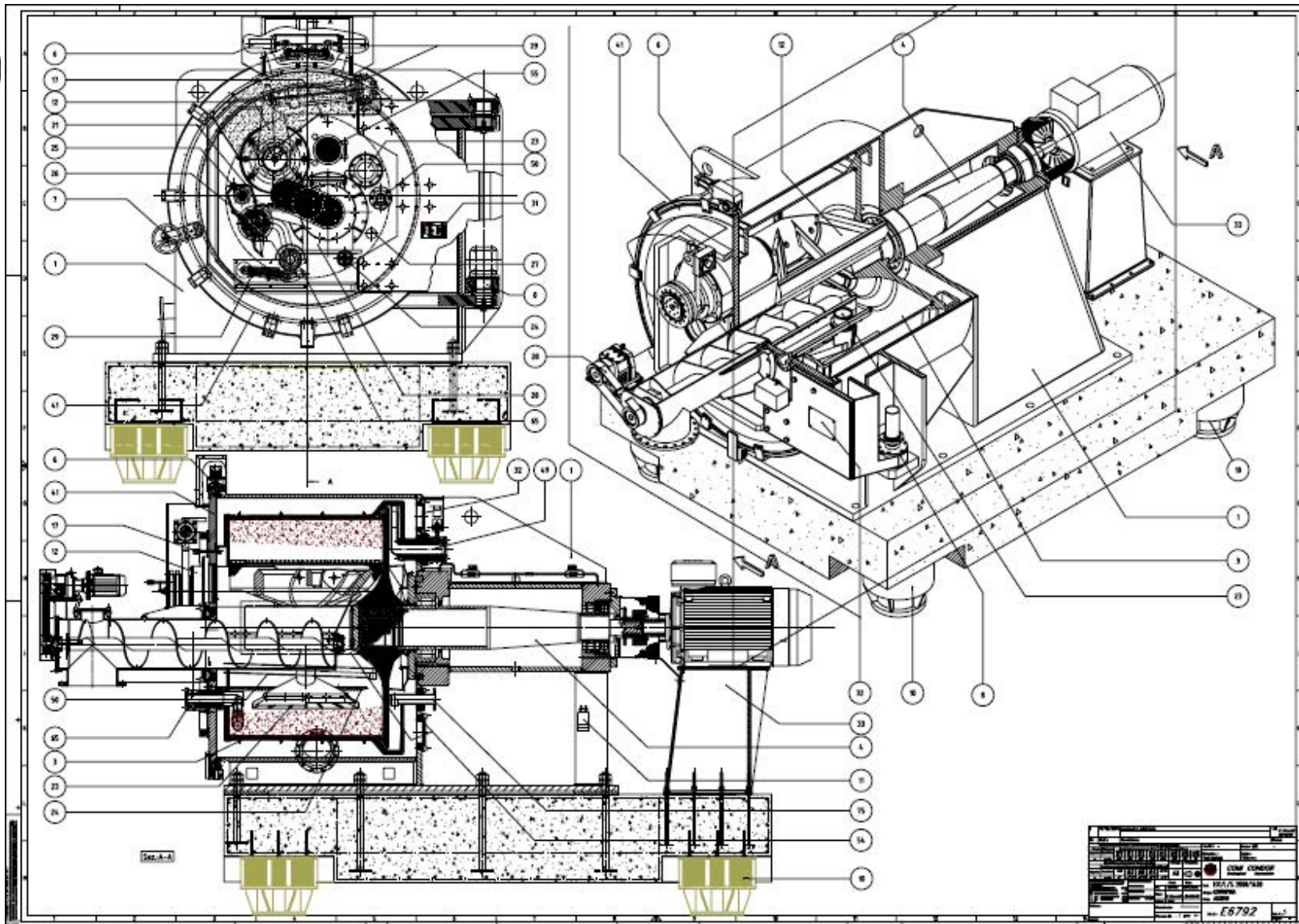




# Optimum mechanics

- Lower vibrations
- Quieter (<80 dB(A))
- Easier maintenance access







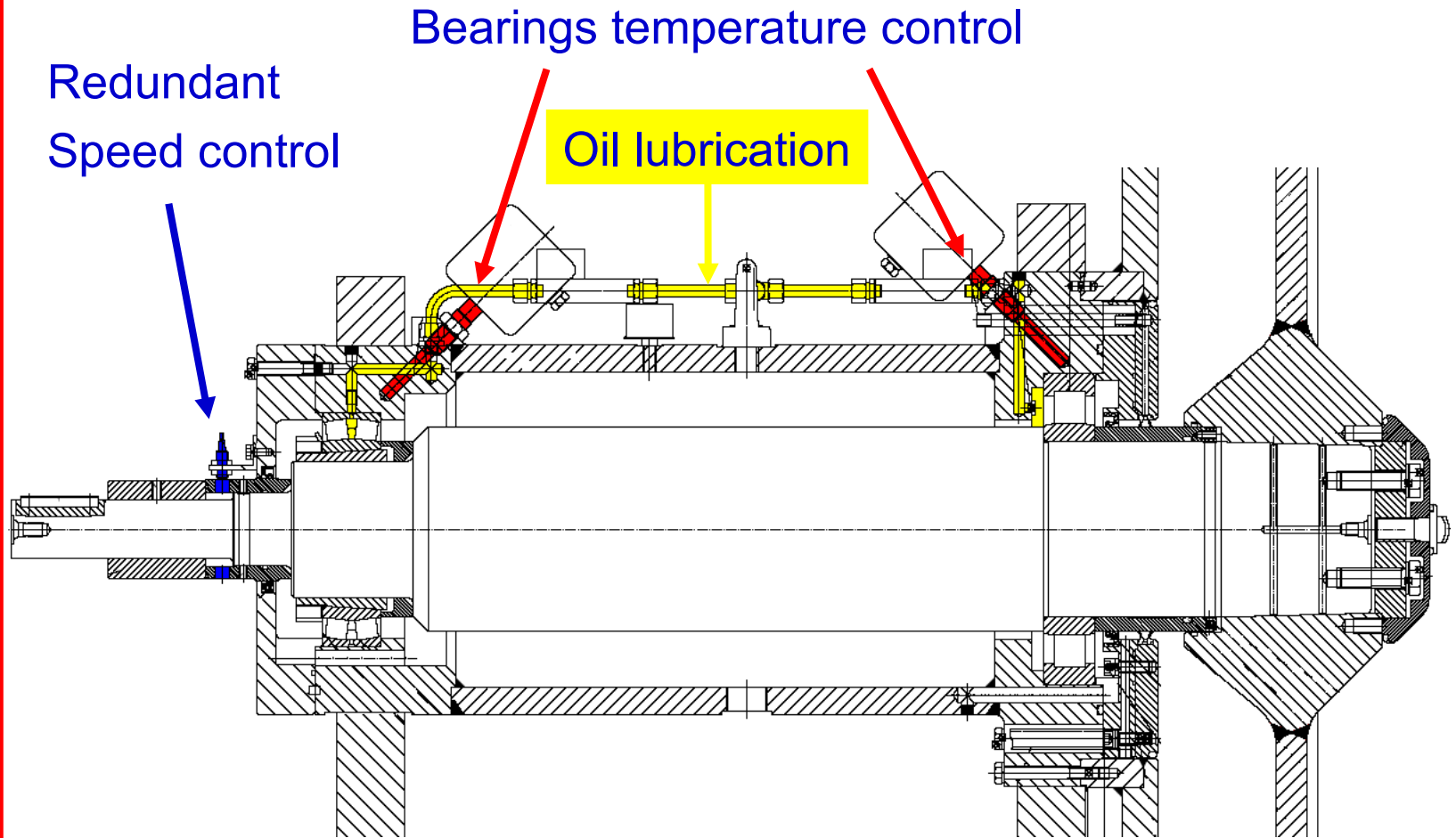
# Front side





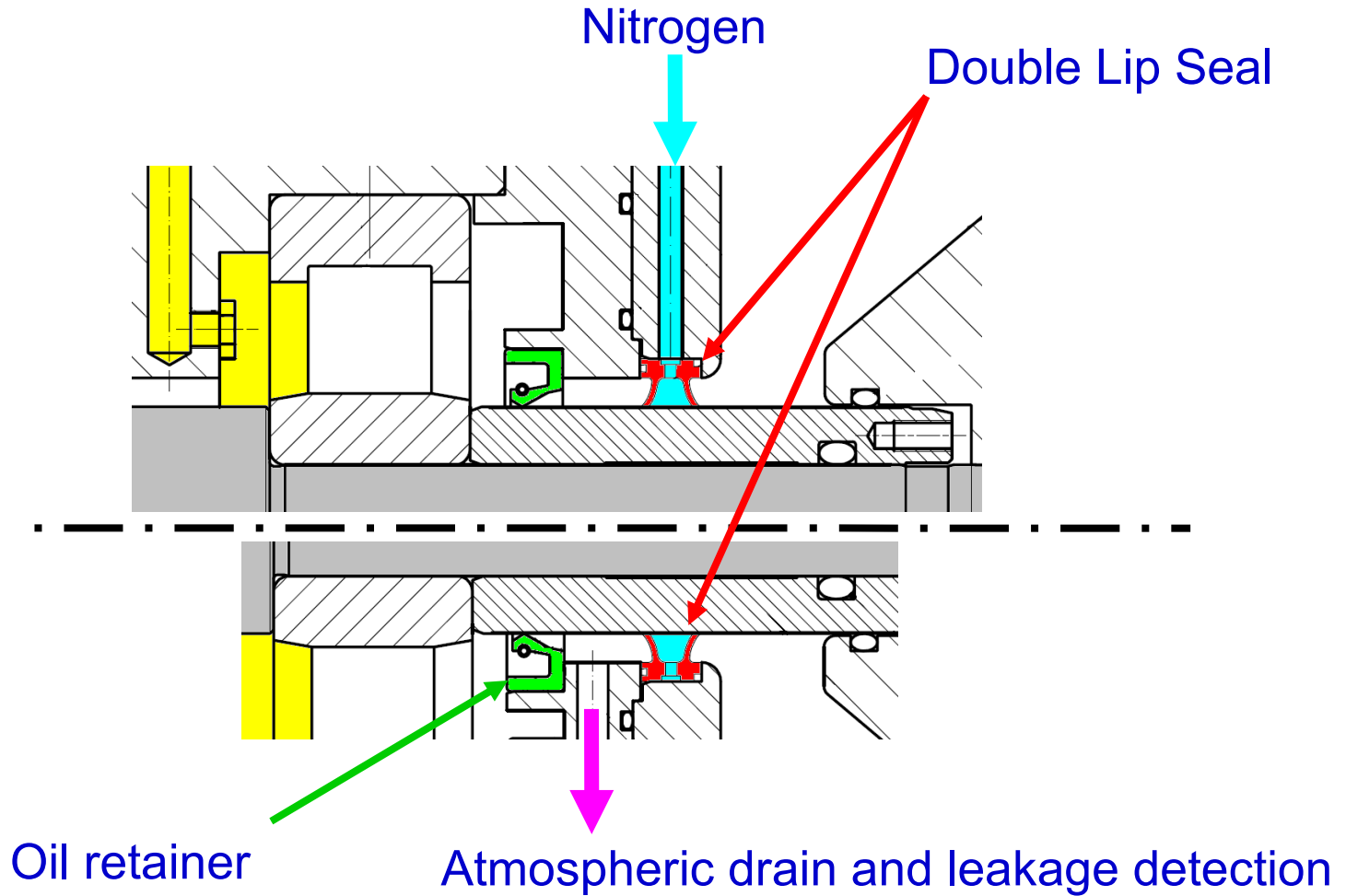


# Bearings assembly



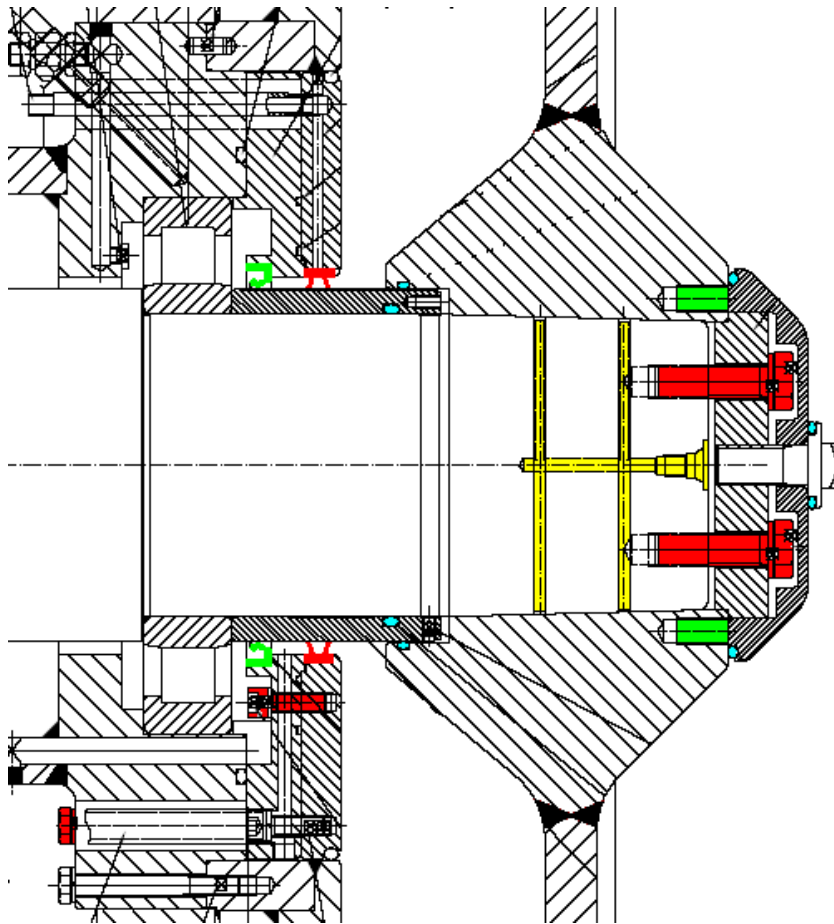


# Shaft seal



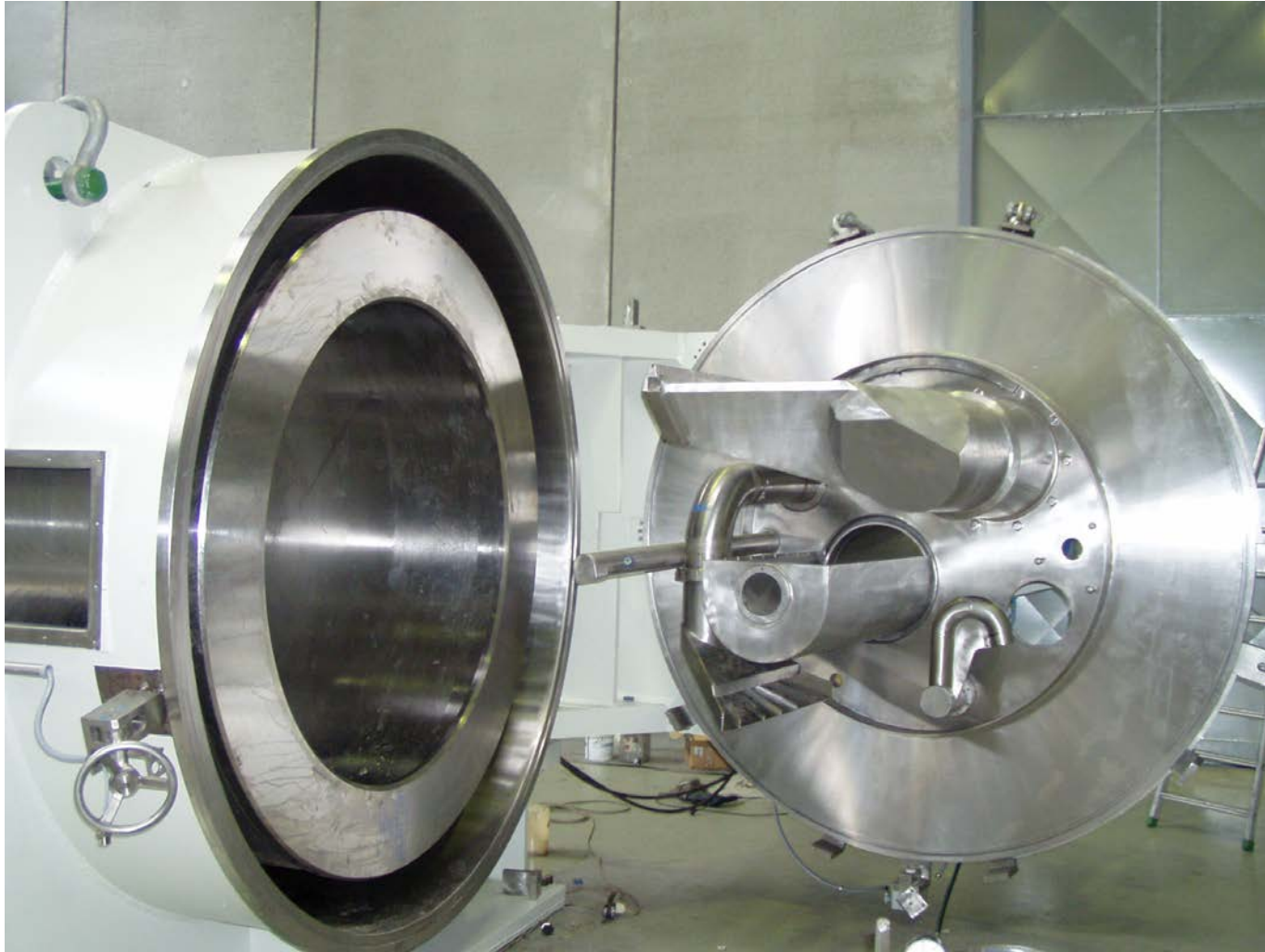


# Basket assembling





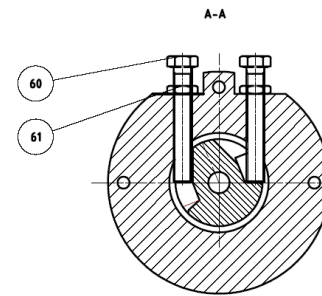
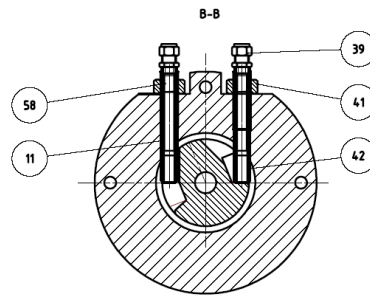
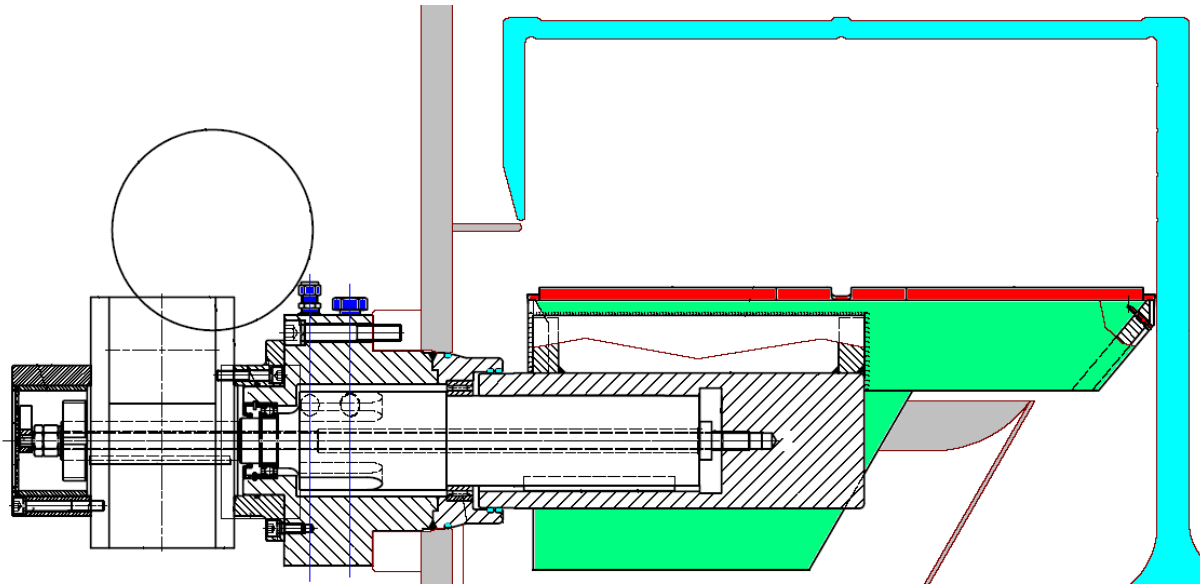
# Process chamber





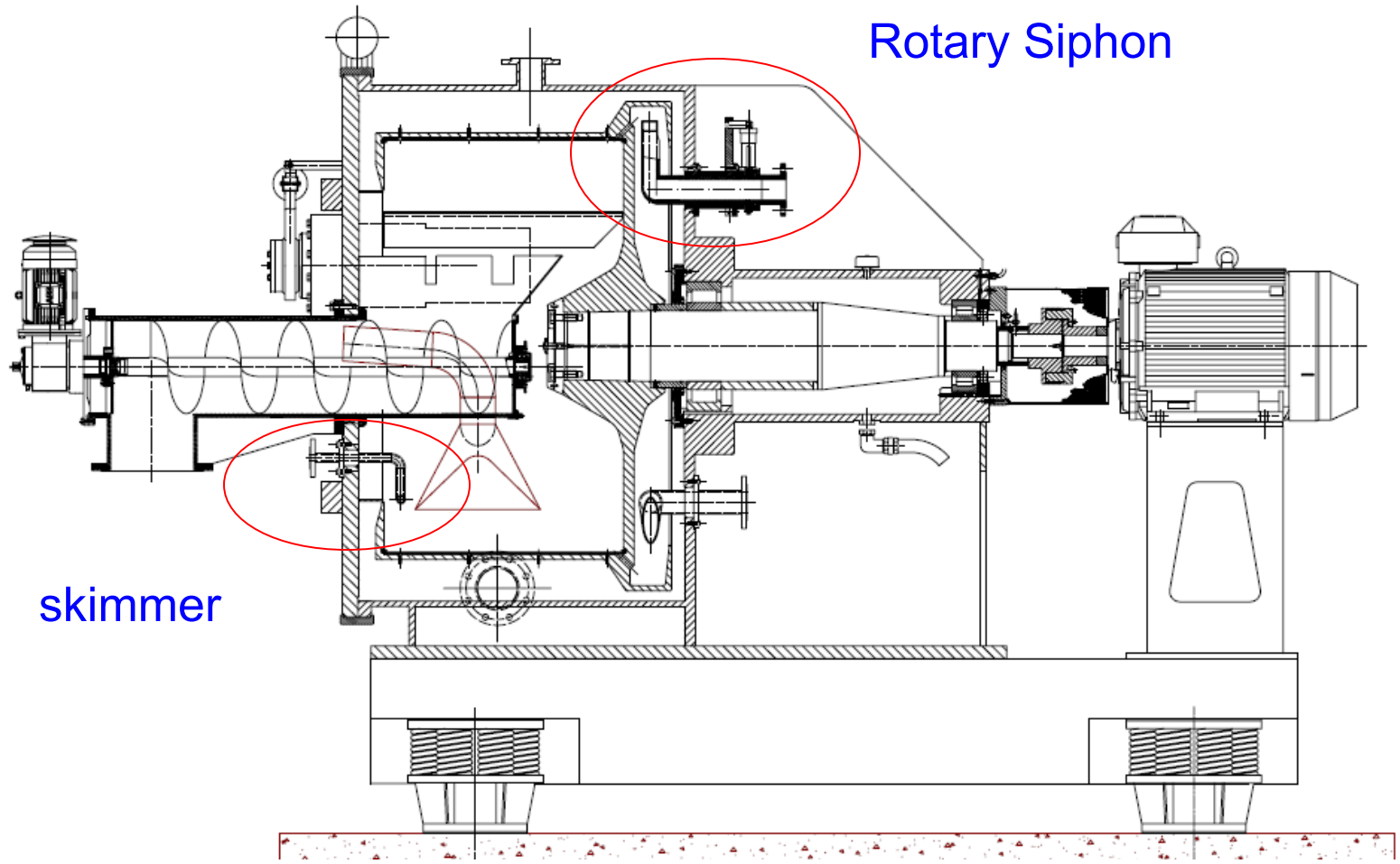


# Peeling knife



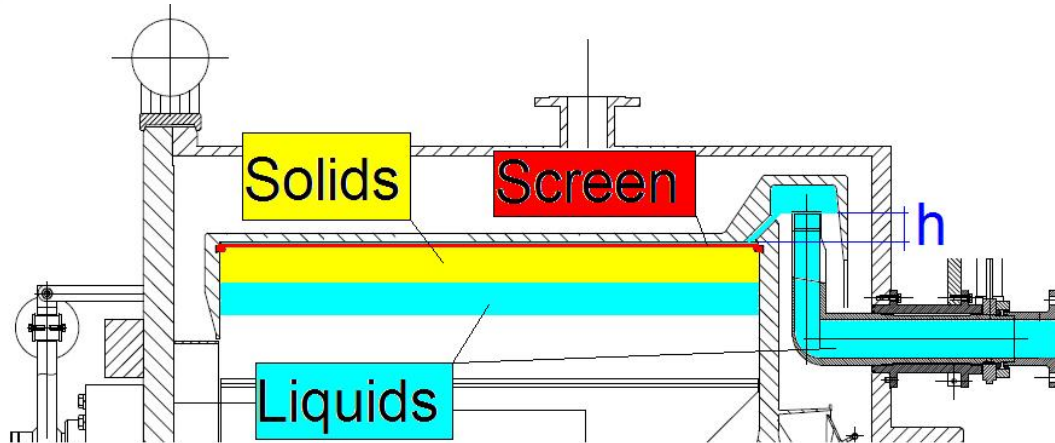


# Cross section





# Rotary siphon



$$\Delta p \propto xg \cdot \rho_l \cdot h$$

Created vacuum is proportional to g-factor, liquid density and fluid height





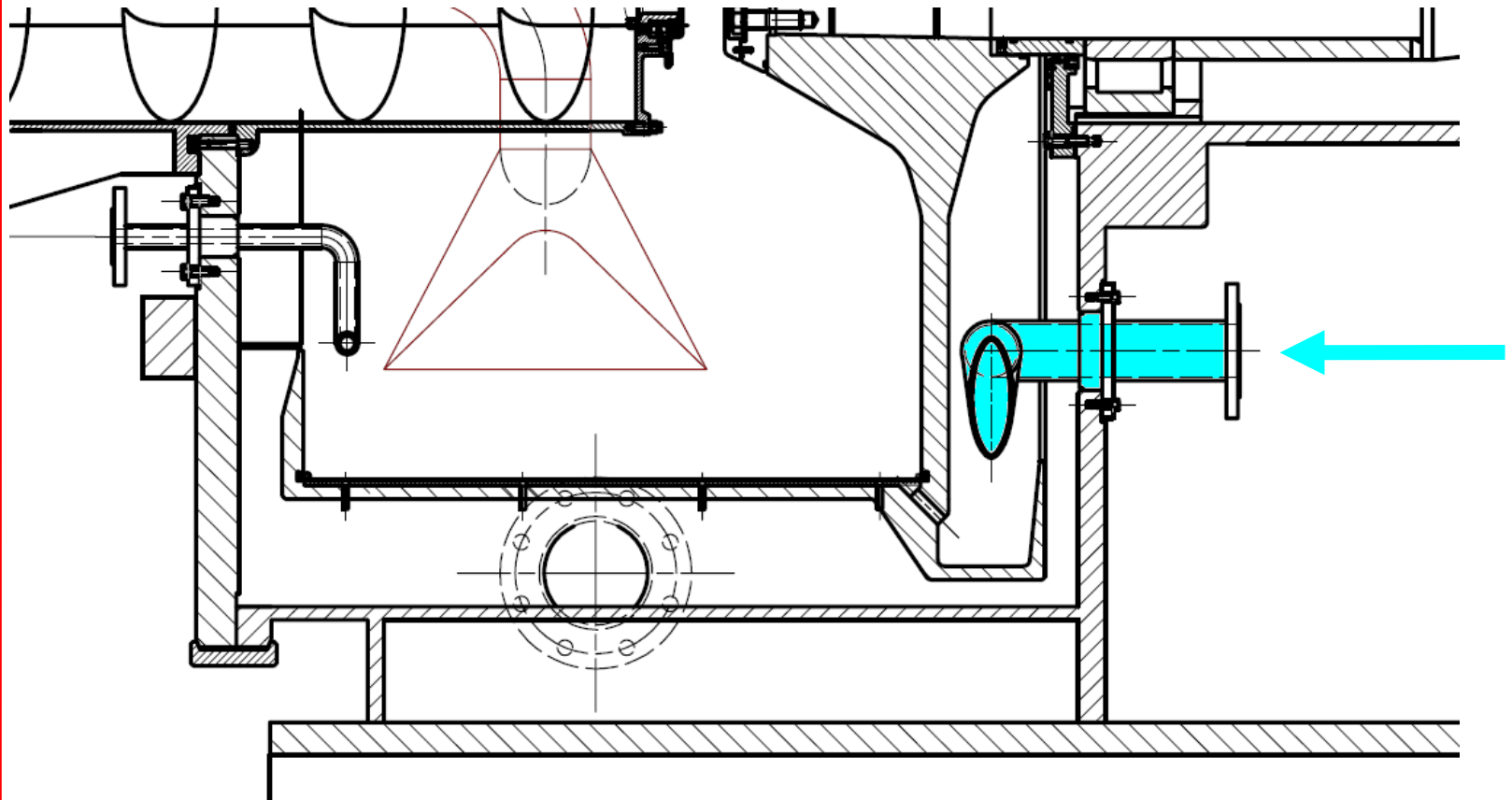
# Skimmer





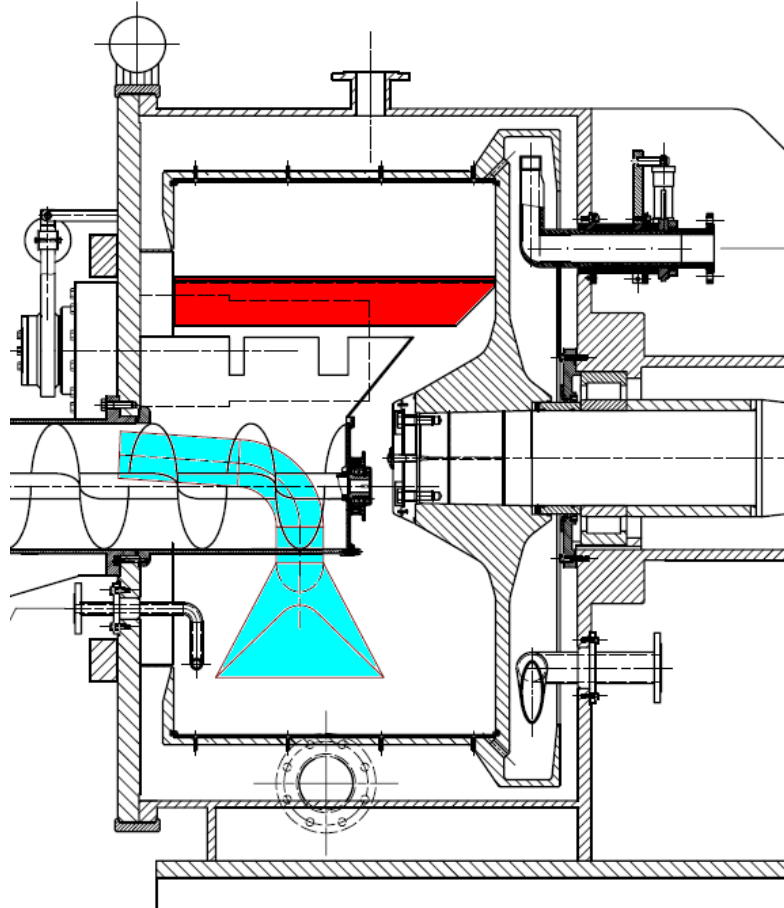


# Rotary siphon option: Heel cake regeneration by back-washing





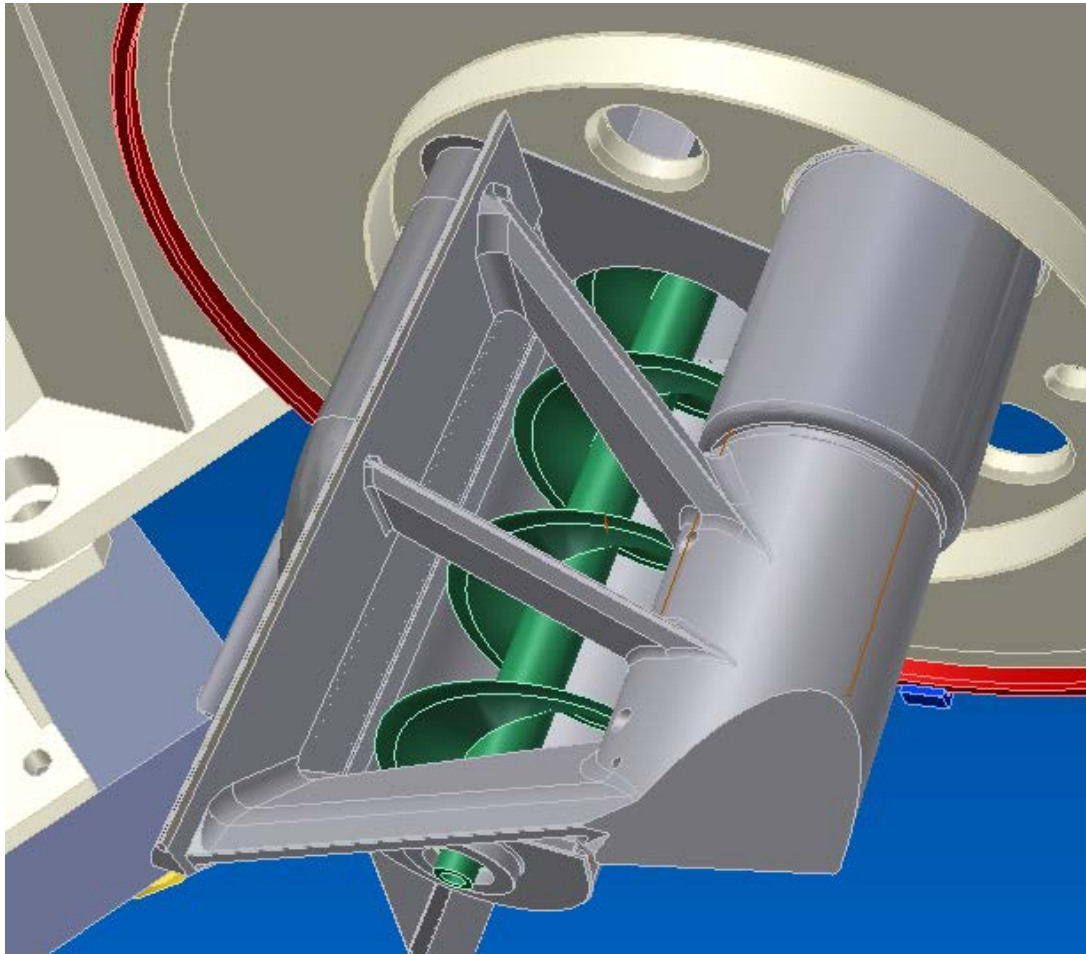
# Heel cake removal



Washing liquid at high pressure is shot against the heel cake to lift it.  
The knife is in peeling position to deviate the heel cake to the discharge.



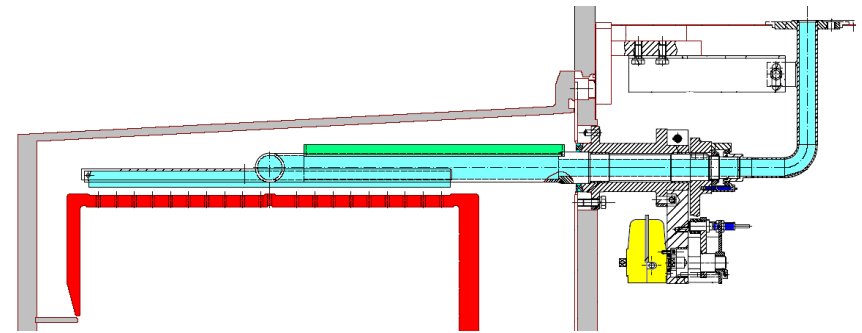
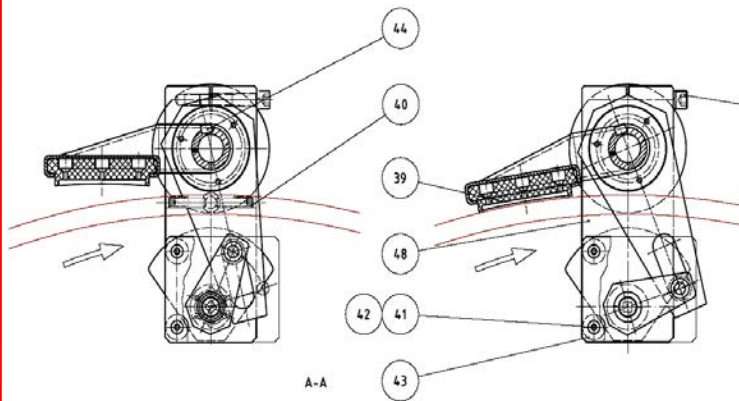
# Scraper cleaning



The scraper may be cleaned to avoid excessive product build up.



# Heel cake removal

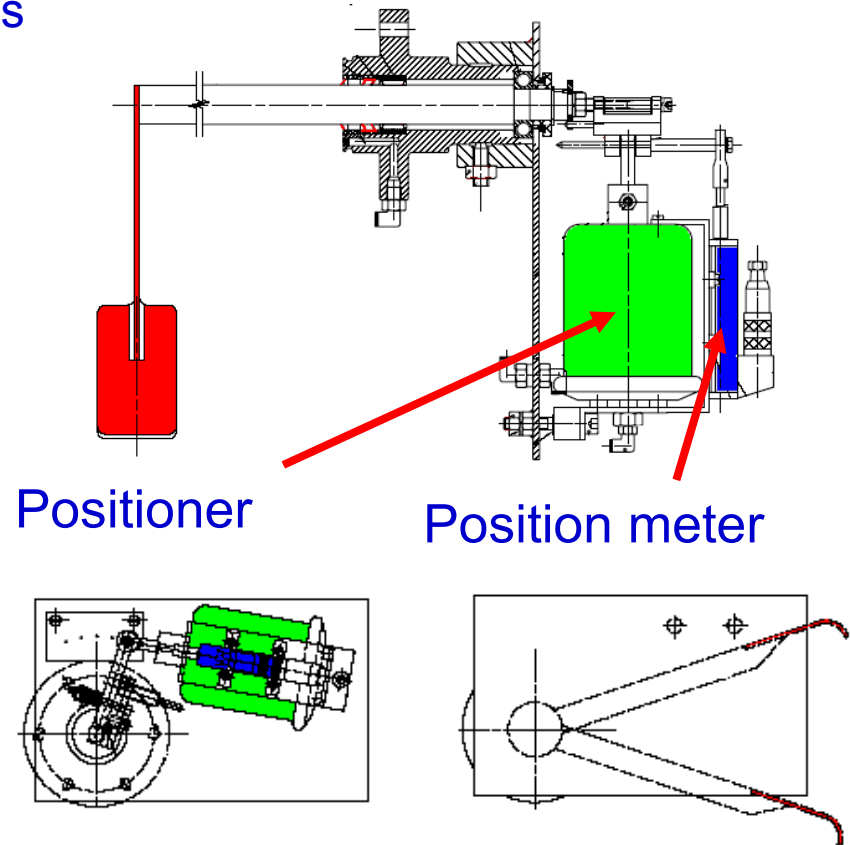
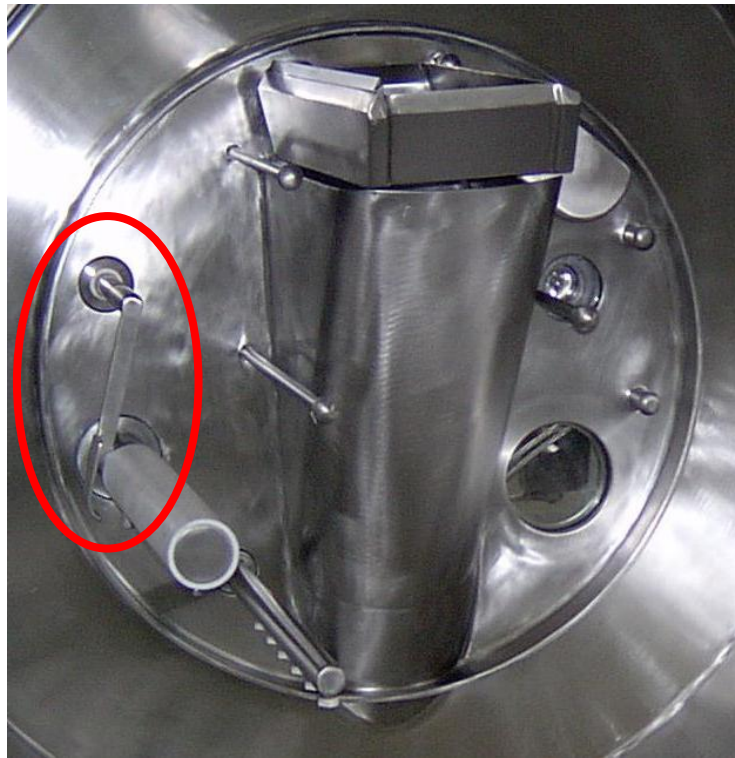






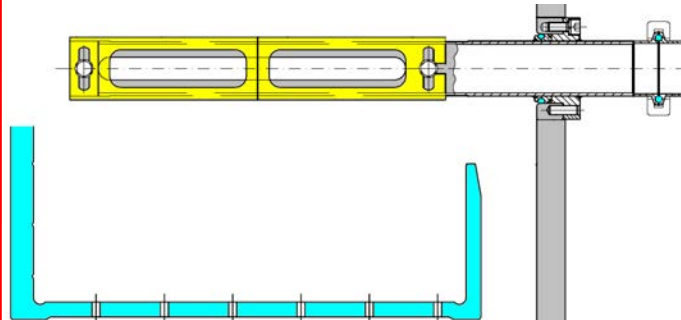
# Cake detector, mechanical type

The system is controlled by the software, via two analog signals, input and output. The desired thickness has to be input as a parameter in the feeding and in the washing phases



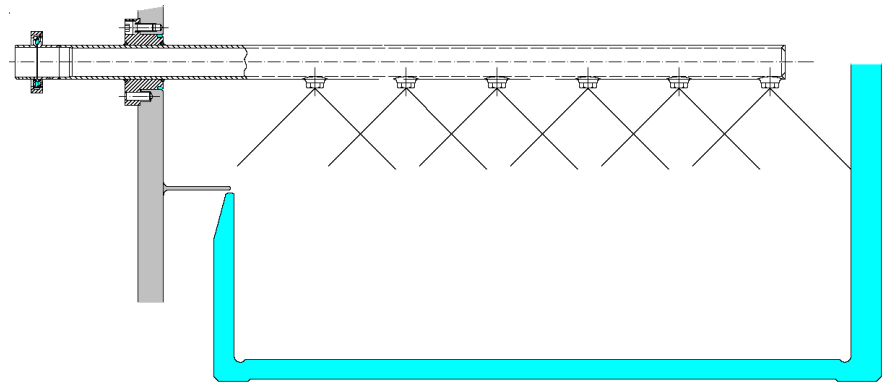


# Alternative Feed pipes



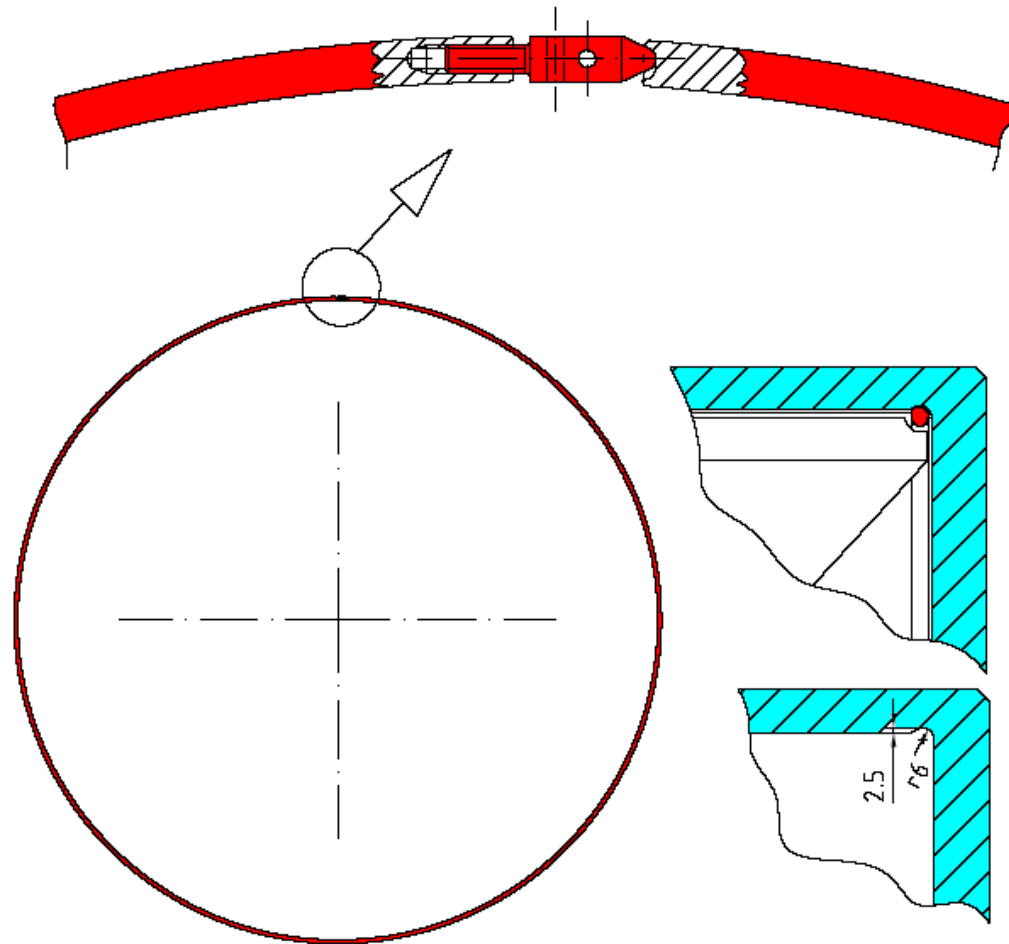


# Wash pipe



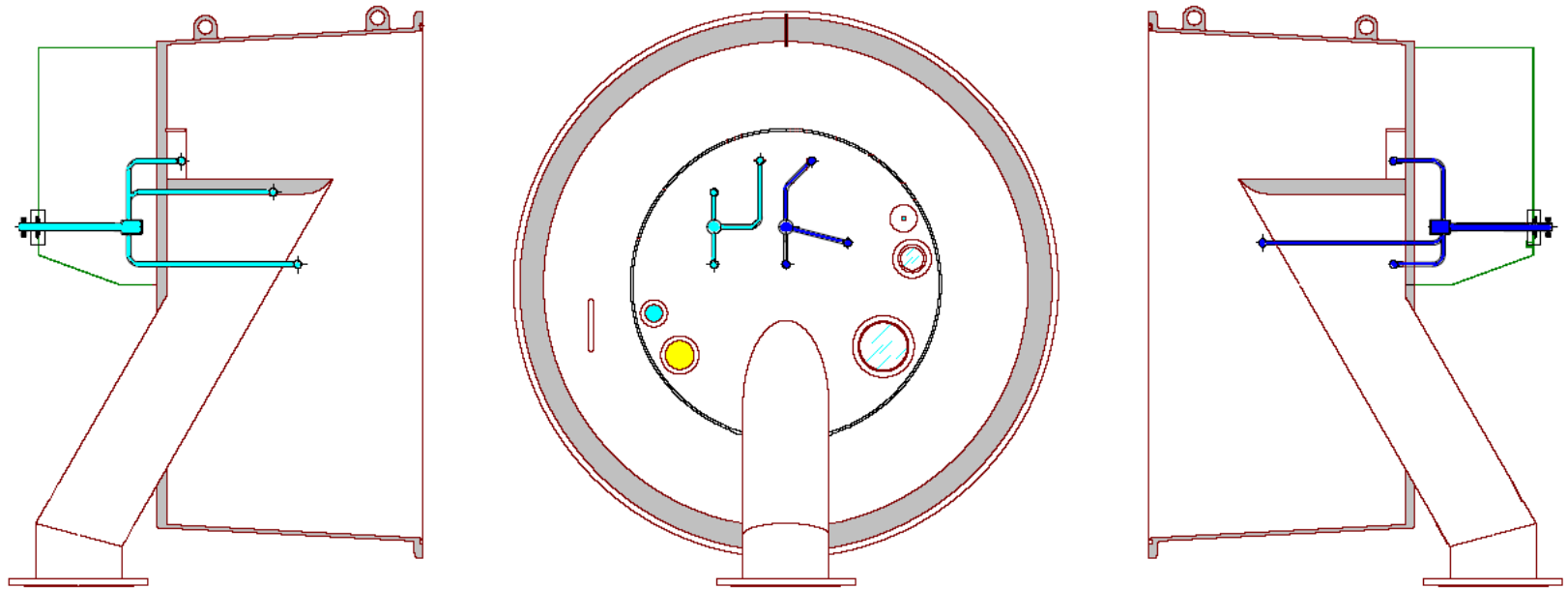


# Cloth retention ring





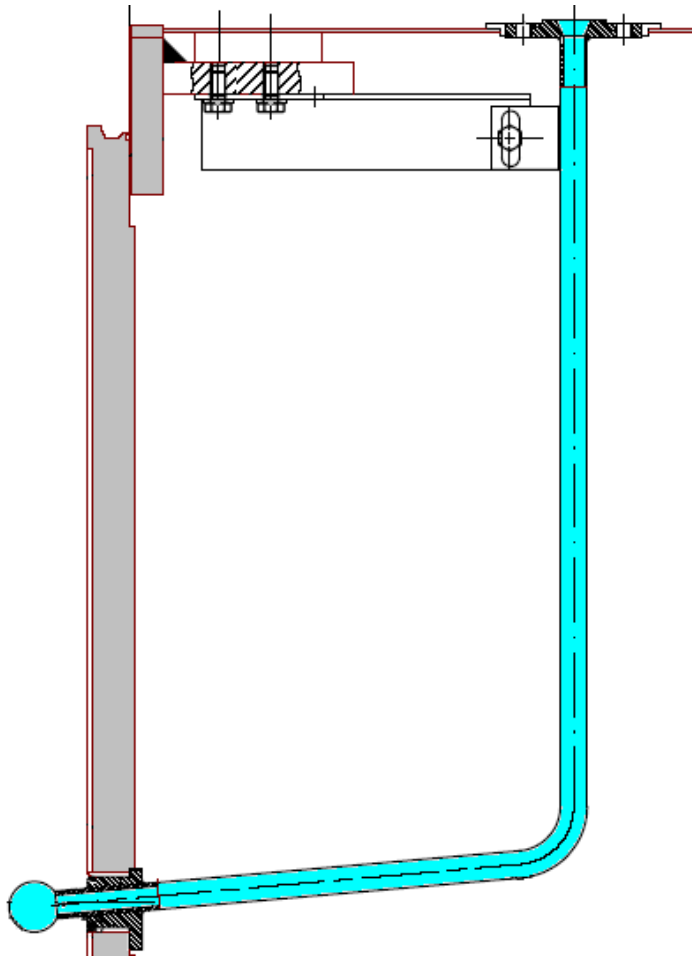
# CIP front side







# CIP rear side





# Basket dia 1700 mm





# Basket dia 2000 mm

